

## A brief history

Go is one of the oldest board games in the world. Its true origins are unknown, but it almost certainly originated in China over 2500 years ago.

Go first flourished in Japan. Introduced before the 8th century, it gained popularity at the imperial court and, from this auspicious beginning, took root in Japanese culture. In the 17th century the four great Japanese Go schools were founded with state funding and, over the next 250 years, the intense rivalry between them drove Go skills to new heights.

Since then, China and Korea have fought back. In the modern Go scene these three countries compete on equal terms, with national and international tournaments attracting major corporate sponsorship and a large public following. [In Korea Go is known as Baduk and in China it is known as Wei-qi.]

It was only in the 20th century that Go spread widely in the West, but it is now well established all over the world. More than 60 countries compete in the annual World Amateur Go Championship, and American Michael Redmond has reached the top level of professional Go in Japan.

Starting with Beijing in 2008, the World Mind Sports Games has included Go along with Chess and Bridge.



## What makes Go special?



As mental exercise, Go is outstanding. The rules are very simple, yet the strategy is complex and the patterns that emerge are intricate and beautiful.

The board starts empty and gradually fills up, as the pieces (stones) don't move once played. You can also capture and remove your opponent's stones by surrounding them.

The object is to surround more territory than your opponent. The winner is the player who does this more efficiently, by finding the right balance of aggression with prudence, and of intuition with logic.

Each game of Go quickly takes on its own character thanks to the large board. A setback in one or two areas often isn't fatal; you can still fight back and win. While Go has its opening strategies, repeating many of the same plays in the same order as a previous game is rare, so players can become strong without memorising complicated openings.

Go also has a very effective handicapping system, allowing players of widely differing skill levels to play on equal terms without distorting the character of the game.

Despite many years of effort, computers still do not play Go to the same level as they do in Chess and are defeated by human experts.

See <http://www.britgo.org/about.html> for more about the game and the rules.

## Abbreviated rules

1. Start with an empty board - 9x9, 13x13 or 19x19.
2. Starting with Black, alternately play a piece (stone) on an empty intersection of the board. Once played, stones don't move.
3. A stone is captured and removed from the board when all intersections directly adjacent (not diagonally) are occupied by the opponent. Solidly connected strings of stones are captured as a whole.

**Diagram 1** a, b and c show some captured White stones, prior to removal.

4. Playing a stone so that your stone (or string) has no empty adjacent intersections is illegal, *unless* you capture some opponent's stones as a result.
5. Repeating a former board position is illegal. You must play elsewhere first. This normally occurs when you capture a single stone, and your opponent could capture one stone back.

**Diagram 1** shows an example at d. After Black captures by playing at 1, White cannot recapture immediately.

6. When there are no useful plays left, you may pass, handing over a stone as a capture.
7. The game ends when there are two or three consecutive passes, with White passing last.
8. Stones that cannot evade capture, but are not totally surrounded, are removed and treated like other captures. If you can't agree which stones are in this state then just continue playing.
9. The player with the greater number of empty points surrounded plus stones captured is the winner.

**Diagram 2** shows the end of a game, during which Black captured one stone at a. Black has surrounded 15 points, 10 in the lower right, including the point a, and 5 towards the top. Adding his capture, Black has 16 points. White has 17 points, so White wins by one point.

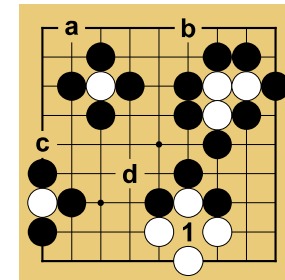


Diagram 1

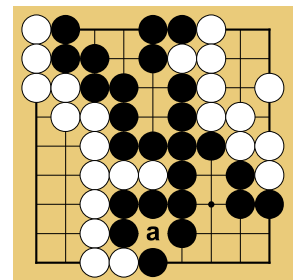


Diagram 2



## Join us now!

Send this form to the address on the back or join online at <http://www.britgo.org/join>.

Name \_\_\_\_\_

Address \_\_\_\_\_

\_\_\_\_\_ Post code \_\_\_\_\_

Telephone \_\_\_\_\_

Email \_\_\_\_\_

Please tick if you would like to get the British Go Journal electronically and don't want the paper version

Concessions, please specify:

Under 18       Full-time student (under 26)

If you're receiving a UK State benefit please tick:

Job Seekers Allowance  
 Pension Credit     Disability Living Allowance

I enclose payment of £ \_\_\_\_\_ for \_\_\_\_\_ years at £ \_\_\_\_\_ per year

(Make cheques payable to **British Go Association.**)

Please tick if you want your contact details to be private and not given to other members for the purpose of playing Go.

I agree that the Association may keep a record of this information, on the understanding that it will not be passed on to any other organisation except as required by law. (Our Data Protection Policy can be seen on our website.)

Signed \_\_\_\_\_ Date \_\_\_\_\_

Date of birth (if under 18)

This is needed so that we can contact you regarding some international tournaments which are for specific age groups.

Family membership (please list all members):

### Subscription rates as of June 2015

Standard: £24, Student (online-only) £10, Other Concessions: £15  
Family: £32 Europe: £28 Rest of World: £32

If you pay in advance you can join for up to five years at the Standard or Family rates.

Please check the latest rates at <http://www.britgo.org/join>

## British Go Association

We are a voluntary organisation dedicated to promoting the game of Go in the UK. Membership is open to all on payment of an annual subscription. We support Go playing at all levels, from beginner upwards. Benefits of membership include:

- Access to special teaching events and seminars, both on-line and off-line, including a Game Review service
- Free subscription to the quarterly printed British Go Journal (Online-only members can view this on our website)
- A monthly electronic newsletter
- Members-only section on our website
- Discounts on the price of books and equipment at tournaments and also from our preferred suppliers
- Entry at a discounted rate to an extensive series of UK and online tournaments
- Eligibility to enter the British Go Championship and to represent the UK at international events
- Introduction to other Go players in your area, to help form a Go club if there isn't already one

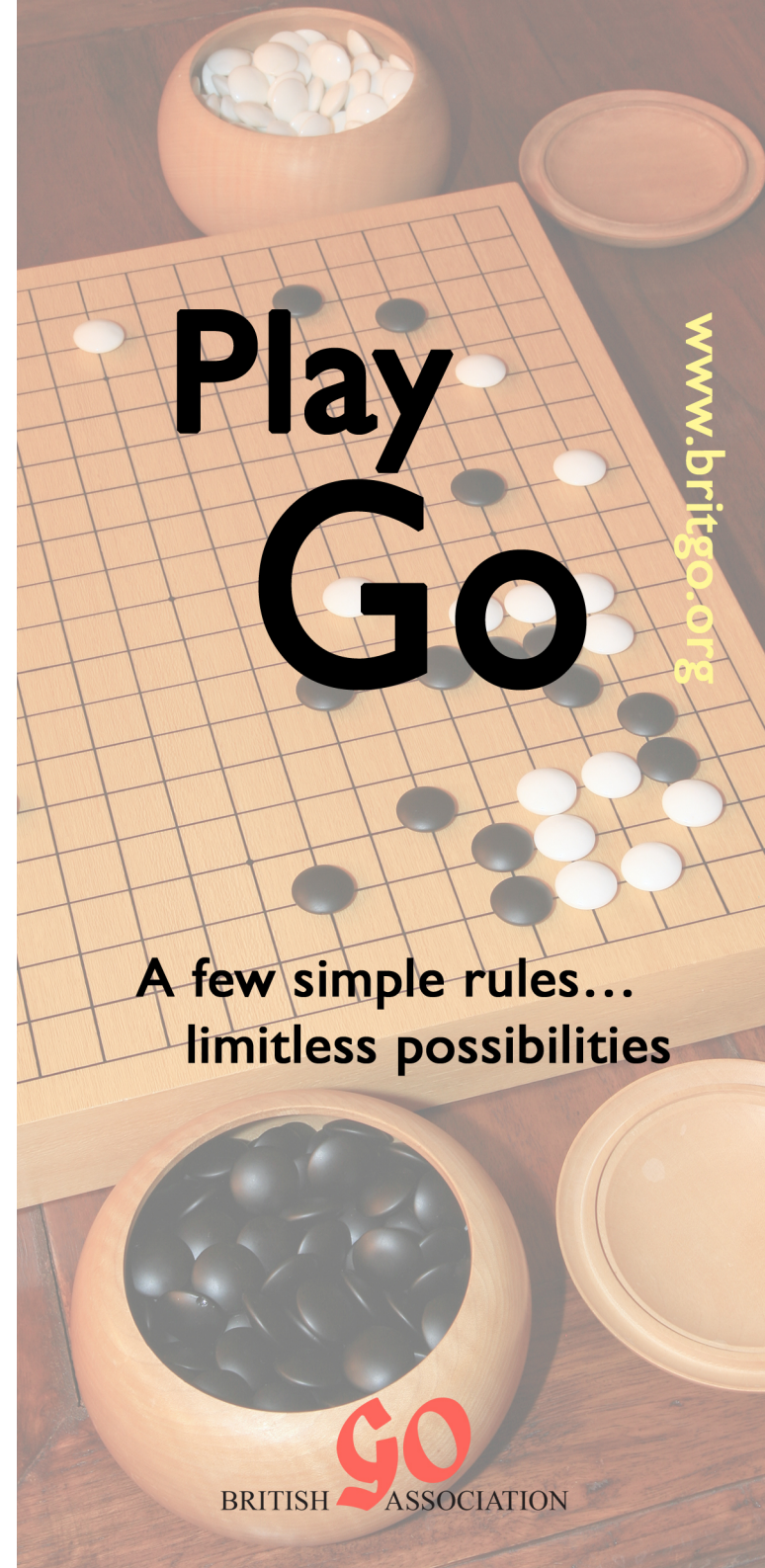
Your membership subscription also helps us introduce Go to young people and adults.

For further information about how to play Go or find your local club visit

[www.britgo.org](http://www.britgo.org)



or contact the Membership Secretary:  
Paul Barnard, 16 Braemar Close,  
Swindon SN3 1HY  
Telephone: 01793 692408  
Email: [mem@britgo.org](mailto:mem@britgo.org)



# Play Go

[www.britgo.org](http://www.britgo.org)

A few simple rules...  
limitless possibilities

**GO**  
BRITISH ASSOCIATION