

MAGNETIC GO SET

Price: £5 (+£1 p&p)

Available from the BRITISH GO ASSOCIATION Book Distributor, The Cottage, Church Lane, Sproughton, Ipswich, Suffolk IP8 3BA.

The British Go Association

Printed by Hanway Print Centre Ltd. 01-226 6868

BRITISH
GO
JOURNAL

碁 50p

No. 52 March 1981



KISEI TITLE ~ SHUKO
MAKES IT FIVE IN A ROW

CONTENTS

Notice of AGM of the BGA	4	<u>GLOSSARY OF TECHNICAL TERMS</u>
Prague tournament	5	ATARI: Immediate threat to capture.
St. Valentine's day massacre	7	DAMEZUMARI: Shortage of liberties.
Massacre, classical style	10	GOTE: Opposite of sente.
News	14	HANE: Bend round the opponent's stones.
Tournament calendar	15	KIKASHI: Forcing play.
The virtues of vigour	16	MIAI: Two moves so closely equal that both become non-urgent.
Shape	18	SEMEAI: A capturing race.
Wood, shell and stone	20	SENTE: Having, or retaining, the initiative.
Revelations	22	SHIMARI: A corner enclosure, usually of two stones.
Solutions to problems	23	TESUJI: A tactically skilful play.
		TSUME GO: Localised life and death problems.
		YOSE: The endgame.

THE BRITISH GO ASSOCIATION

Membership Secretary: Derek Hunter, 60 Wantage Road, Reading. Tel: 0734 581001

Secretary: Matthew Macfadyen, 46 Stanhope Road, Reading. Tel: 0734 867684

President: Toby Manning, 110 Moselle Ave, London N22. Tel: 01-889 5247

Treasurer: Brian Philp, 130 Woodacombe Lodge Road, Selly Oak, Birmingham.
Tel: 021 472 1890

Book Distributor: Brian Bolton, The Cottage, Church Lane, Sproughton,
Ipswich, Suffolk IP8 3BA. Tel: 0473 47999

Tournament Coordinator: David Goto, 11 Buxton Gardens, London W3 9LF
Tel: 01-992 2000

Publicity Officer: Stuart Dowsey, 6 Belsize Lane, London NW3 5AB. Tel: 01-794 9881

THE BRITISH GO JOURNAL is distributed free to members of the BGA or costs 50p retail within the UK. Opinions expressed are not necessarily those of the BGA.

This issue was produced by Jim Barty, Alison Cross and Matthew Macfadyen.
Copy date for the next issue (No.53) is 25th May for publication at the end of June.
All contributions are welcome and should preferably be typed or written double spaced on one side of the paper only and sent to the British Go Journal, c/o Alison Cross, 25 North Villas, Camden Square, London NW1 9BL.
Tel: 01-267 5711.

ADVERTISING RATES are £40 per page and pro rata. Technical and series discount details available on request.

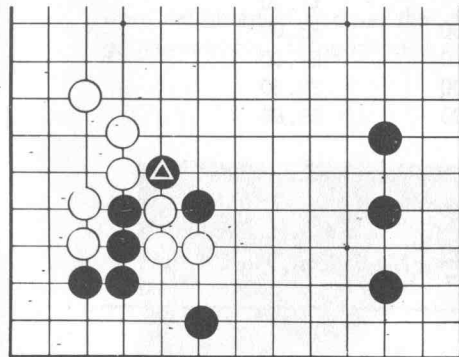
PUBLISHED by the British Go Association. © Copyright and translation rights reserved.

EDITORIAL

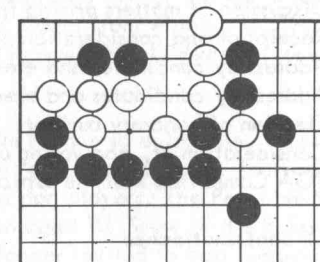
This is your journal. Hundreds of go players read every issue and consistently give only the minutest dribbles of feedback. So what goes in is what we think should go in. But, repeat first sentence. Seems to us that you should have some say, but teasing 'some say' out of you is really rather difficult. This is our latest try: glance over your back issues and compile a list (write it down!) of the best ten articles you've ever seen in the BGJ (and the worst ten if you feel so moved). Tack a general comment on the end (but only if you can think of one) and then before you can stop yourself stuff it in an envelope, address envelope to BGJ, 25 North Villas, Camden Square, London NW1 9BL add stamp and post. I know it's hard but you're a go player and should manage it.

PROBLEMS

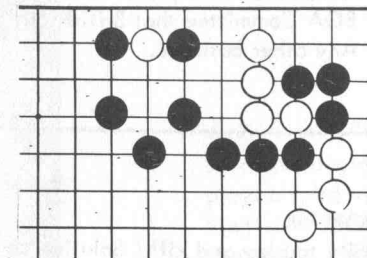
(Solutions inside back cover)



White to play - anyone can spot the double atari, but what white needs is to capture the (marked) cutting stone.



Black to play - white's group can be killed unconditionally. See "Shapes" for hints, see "Massacre, classical style" for where it came from.



Black to play and kill white's corner group - be sure that you have considered all white's possible replies.

