

British Go Journal

No. 68 October 1986 £1.00



CONTENTS

Spot the move	3
A competition to test your sense of direction.	
Candidates Tournament	4
Report by Francis Roads.	
Challengers Tournament	6
Report by Jim Barty.	
World Amateur	8
Report and games by out man, Terry Stacey.	
BGA Club List	14
News	16
Including Japanese News and Tournament Diary.	
European Championships	20
A report and game commentary by Francis Roads.	
Spot the Move - Answers	24
Richard Granville analyses the answers to our last competition.	
Brute Force and Ignorance	27
Can Go be programmed?	
Meijin title game	30
Kato versus Kobayashi	
Problem answers	31

GLOSSARY OF JAPANESE TERMS

AJI: Latent potential or threats left behind in a position.
 ATARI: Threat of immediate capture.
 FUSEKI: The opening
 GOTE: Not having, or surrendering the initiative (see SENTE).
 HANE: A contact play, 'bending round' an opponent's stone.
 HASAMI: A pincer play.
 HOSHI: The star points.
 JOSEKI: Fixed local sequence, usually at the start of the game and in a corner.
 KAKARI: An approach move to an opponent's corner stone.
 KIKASHI: A forcing move.
 MIAI: Two points which are equivalent, in you take one your opponent takes the other.
 MOYO: A large territorial framework.
 SEKI: Stalemate between two adjacent eyeless groups.
 SENTE: Having or retaining the initiative.
 SHIMARI: A corner enclosure.
 TENUKI: To play away from a local situation.
 TSUME-GO: Life-and-death fights
 YOSE: The endgame.

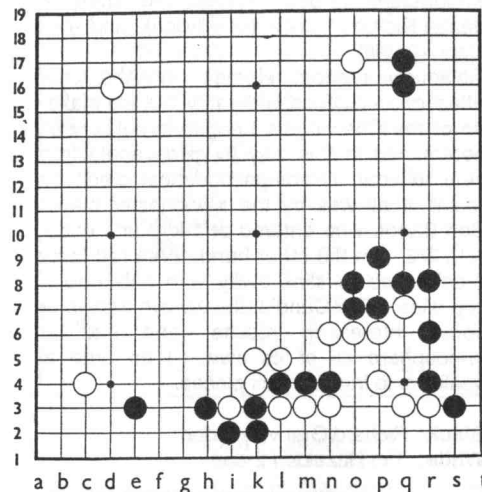
THE BRITISH GO ASSOCIATION

PRESIDENT: Norman Tobin, 10 West Common Road, Uxbridge, Middlesex. Tel. 0895 30511.
 SECRETARY: Tony Atkins, 58 Watmore Lane, Winnersh, Wokingham, Berks. Tel. 0734 78276.
 TREASURER: T. Mark Hall, 21 Terrapin Road, Balham, London SW17 8QW.
 MEMBERSHIP SECRETARY: Brian Timmins, The Hollies, Wollerton, Market Drayton, Shropshire TF9 3LY. Tel 063084 292.
 BOOK DISTRIBUTOR: Clive Wright, 4, The Crescent, Skegby, Sutton-in-Ashfield, Notts, NG17 3FN. 0623 514718.
 TOURNAMENT COORDINATOR: Mark Cumper: 5, Spence Avenue, Byfleet, Surrey KT14 7TG. Tel. 09323 53962.
 PUBLICITY OFFICER: Tim Hazelden, 97 Higham Lane, Tonbridge, Kent.
 BGJ EDITOR: Ian Meiklejohn, 172 Strathyre Ave, Norbury, London SW16. Tel. 01 679 5853.
 SCHOOLS COORDINATOR: Justine Lattimer, 14 College Road, Maidenhead, Berks.
 ANALYSIS SERVICE: Brian Chandler, 10 Simmondley Grove, Glossop, Derbyshire, SK13 9NQ. Tel. 04574 61906.
 ARCHIVIST: Keith Rapley, Wynnswick Road, Seer Green, Bucks, HP9 2XW. Tel. 04946 5066.

THIS ISSUE WAS PRODUCED BY IAN MEIKLEJOHN.
 ALL CONTRIBUTIONS ARE WELCOMED, ESPECIALLY NEWS OF LOCAL EVENTS. THEY SHOULD BE SENT TO THE EDITOR, IAN MEIKLEJOHN, AT THE ABOVE ADDRESS. INCLUDE SAE IF COPY IS TO BE RETURNED. THE EDITOR THANKS ALL CONTRIBUTORS.
 ADVERTISING RATES ARE £50 PER PAGE AND PRO RATA. TECHNICAL DATA ON REQUEST. PUBLISHED BY THE BGA. ALL RIGHTS RESERVED.

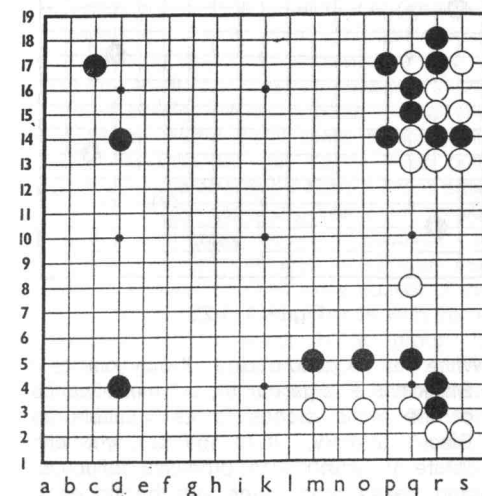
Spot the move

by Richard Granville

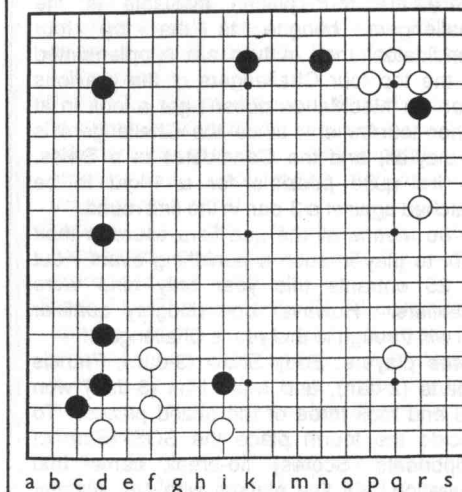


Problem 1. White to play.

Problem 2. White to play



Problem 3. Black to play



Answers to, and commentary on, last issue's competition are to be found on page 22.

